


### Označení dílů

**M** - fotoleptané kovové díly  
**D** - obtisky  
**W** - drát  
**?** - volba

 - vyvrtat

### Parts labelling

**M** - photoetched parts  
**D** - decals  
**W** - wire  
**?** - option

 - drill

### Kamufláž

Celé vozidlo je v šedé barvě  
Panzer grau

### Camouflage

All vehicle is in Panzer grey color

Příložené FotoCD spustíte volbou „PicasaCD”  
Enclosed PhotoCD run by „PicasaCD”

### Návod ke stavbě

Při stavbě postupujte podle instruktažních obrázků.

### Instructions

Follow the instruction drawings the assembly.

**Upozornění:** Během opracování může vznikat prach, který může dráždit dýchací cesty. Používejte ochranu očí při odšťihování kovových dílů.

**Notice:** Machining can produce dust which can be irritating to the respiratory tract. Metal parts should be cut off using protection eyesight.

# MODELCHOICE.NET

ORDER & BUY DIRECTLY FROM MANUFACTURERS

Plus Model s.r.o  
Jižní 56, 370 10 České Budějovice  
Czech Republic  
<http://www.plusmodel.cz>  
e-mail: [plusmodel@plusmodel.cz](mailto:plusmodel@plusmodel.cz)

# 514

# plusmodel

# 1/35

## GENERATORWAGEN M-16 Wehrmacht



### Historie

Pro přepravu těžkých děl v Rakousko-Uherské armádě zkonstruoval Ferdinand Porsche silniční vlak s benzinoelektrickým pohonem. V roce 1909 byl objednán armádou a byl označen jako Daimler-Landwehr-Zug (A-Zug), jeho dalším vývojem vzniknul B-Zug s generátorovým vozem M.12. Potřeba nového prostředku pro přepravu právě zaváděných těžkých hmoždířů Skoda vedla ke zkonstruování nového silničního vlaku C-Zug složeného z generátorového vozu M.16 a z přívěsných vozíků. Generátorový vůz měl šestiválcový benzinový motor, který dával 155 koní při otáčkách 1200/min. Motor byl pevně spojen s generátorem stejnosměrného proudu o výkonu 90 kW a napětí 300 Voltů. Na zadní ose byly dva elektromotory o výkonu 15 koní které poháněly přes pastorek zadní kola. Součástí vozidla byl mechanicky ovládaný naviják a kabelová cívka s osmdesáti metrovým kabelem pro zajištění samostatných vozíků na přesné místo. K vozidlu se připojovali přívěsné čtyřkolové vozíky které se spojovali rámem. Každé kolo mělo svůj elektromotor o výkonu 15 koní. Děla byla rozložena na hlaveň, lafetu s kolébkou, pravou a levou polovinu ložistiště. Jednotlivé části byly uloženy na čtyřnápravových přívěsných vozech. Stejně podvozky pak měl i muniční vůz. Maximální rychlost na rovné cestě byla 12 Km/hod a na železnici 27 km/hod. Spotřeba v členitém terénu byla 400 L na 100 km. C-Zug sloužil k přepravě děl ráže 24 cm, 38 cm a 42 cm.

### History

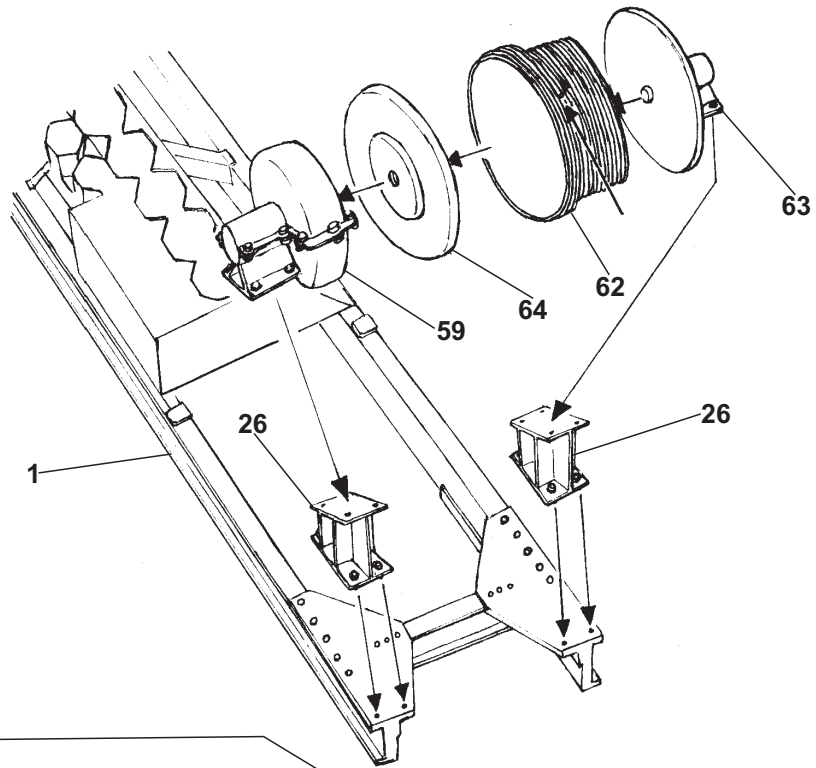
To transport heavy cannons of the Austro-Hungarian army, Ferdinand Porsche constructed a road train powered by a petrol electric engine. The army ordered this machine in 1909 as a "Daimler-Landwehr-Zug" ("A-Zug"), followed later by a "B-Zug" with an M.12 generator vehicle.

After the new heavy Skoda mortars were introduced to the army, a new road train "C-Zug" was built. It consisted of a new M.16 generator vehicle and trailers. The generator vehicle was equipped with a 6-cylinder combustion engine of 155 HP at 1,200 RPM. This engine was firmly connected to a 90kW, 300 Volt DC generator. Two 15 HP electric engines were attached to the rear axle and drove the rear wheels through a sprocket. The vehicle had a mechanical winch and a reel with an 80-meter cable allowing the trailers to be parked in particular positions.

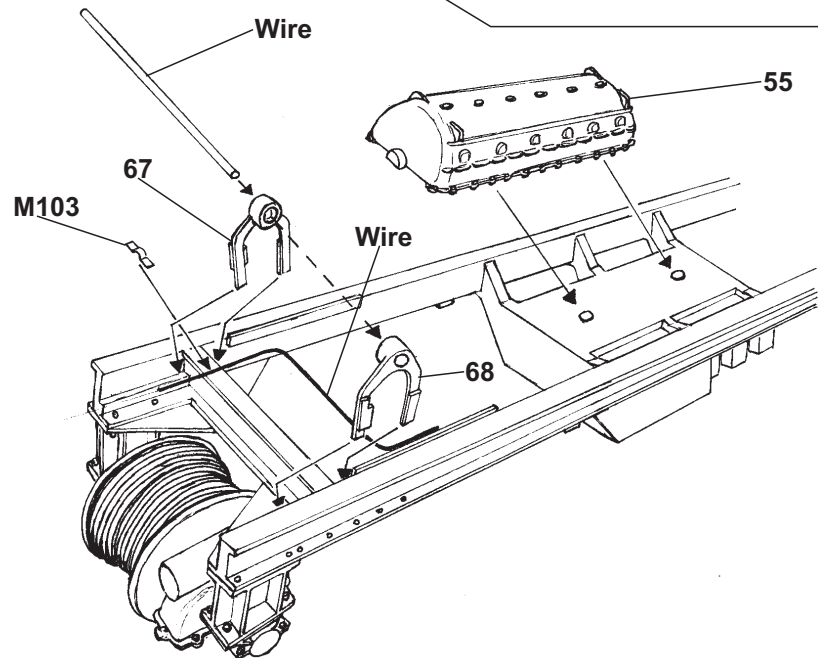
The 4-wheel trailers were connected to each other using a frame. Each wheel had its own 15 HP electric engine. The cannons were dismantled into a barrel, a carriage, and a left and right halves of the base and these parts were put into the 4-axle trailers. The same chassis was used for the ammunition trailer.

The maximum speed was 12 kph on roads and 27 kph on railroads. Fuel consumption on rugged surface: 400 litres per 100 kilometre. The "C-Zug" could carry 24 cm, 38 cm, and 42 cm cannons.

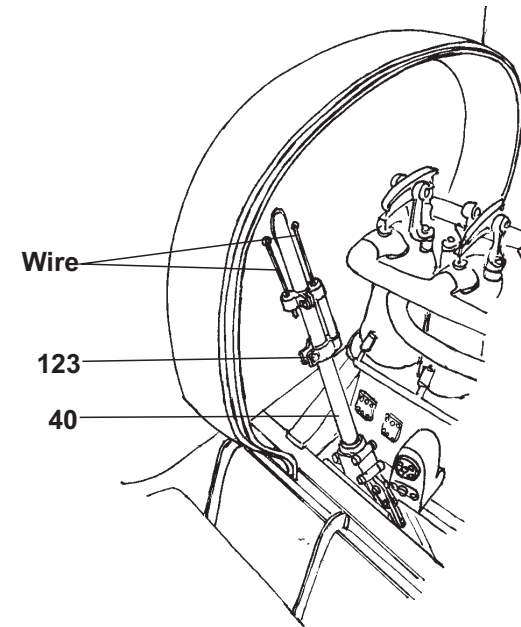
I.



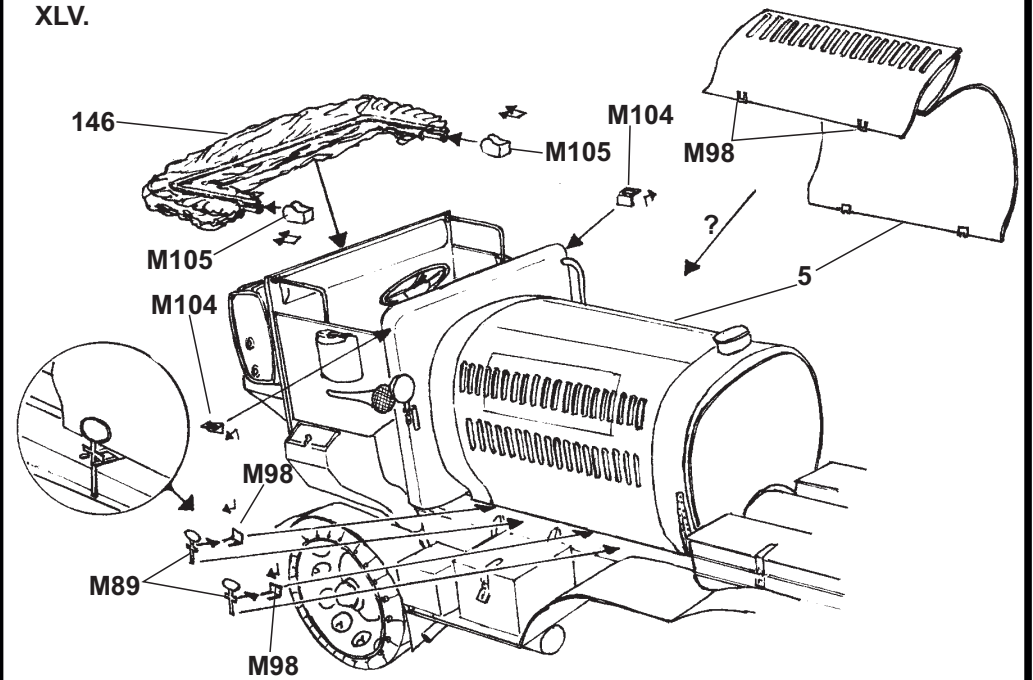
II.



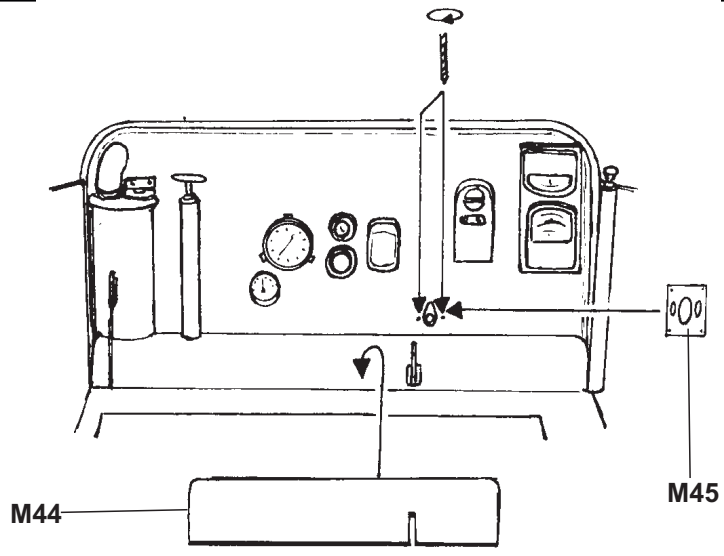
XLIV.



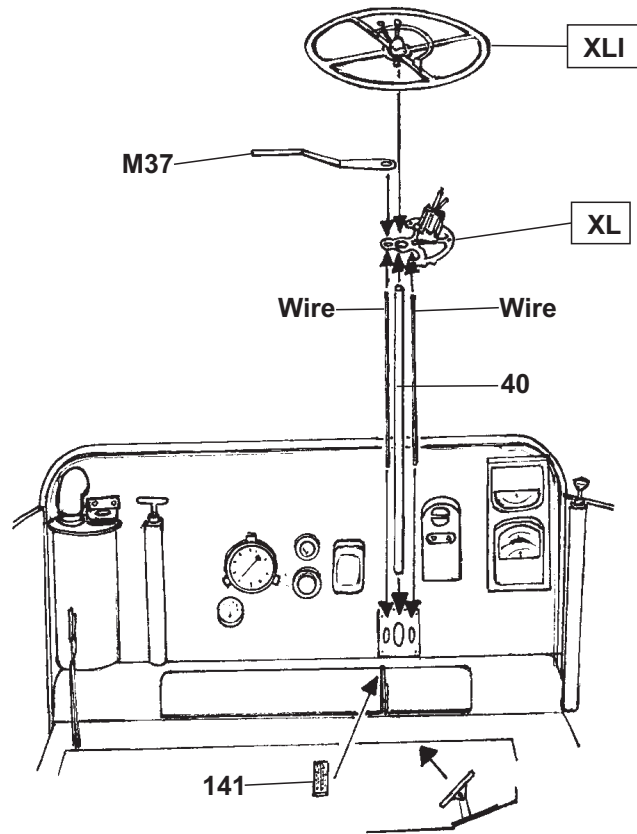
XLV.



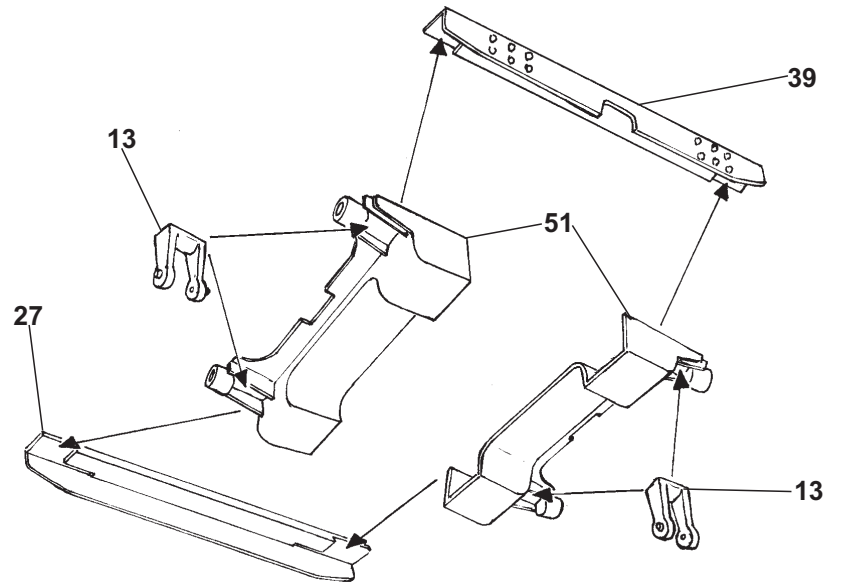
XLII.



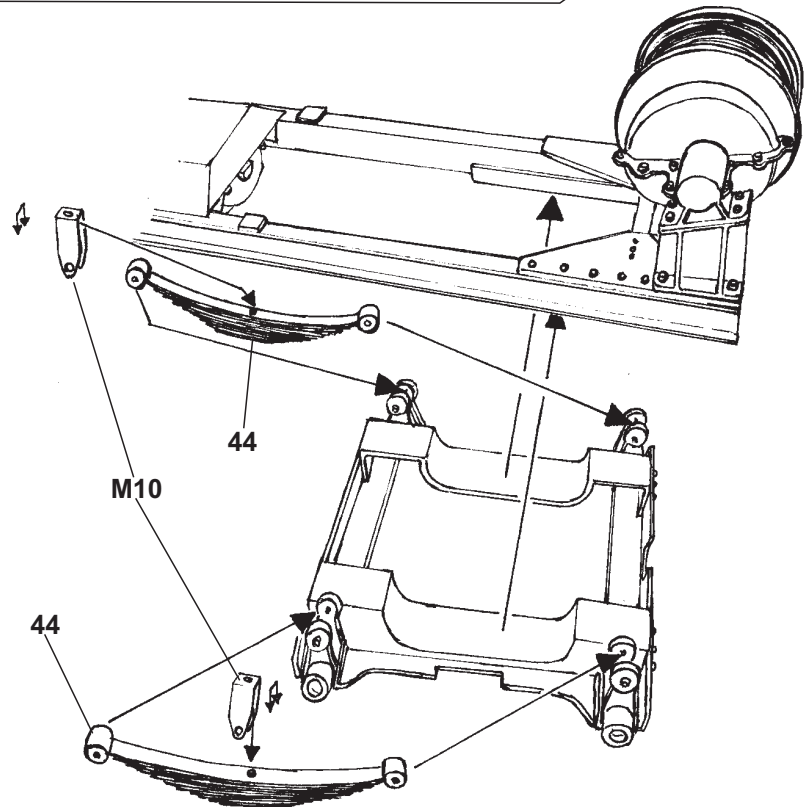
XLIII.



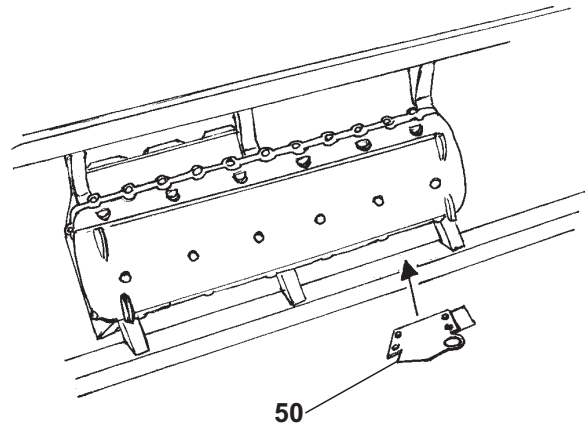
III.



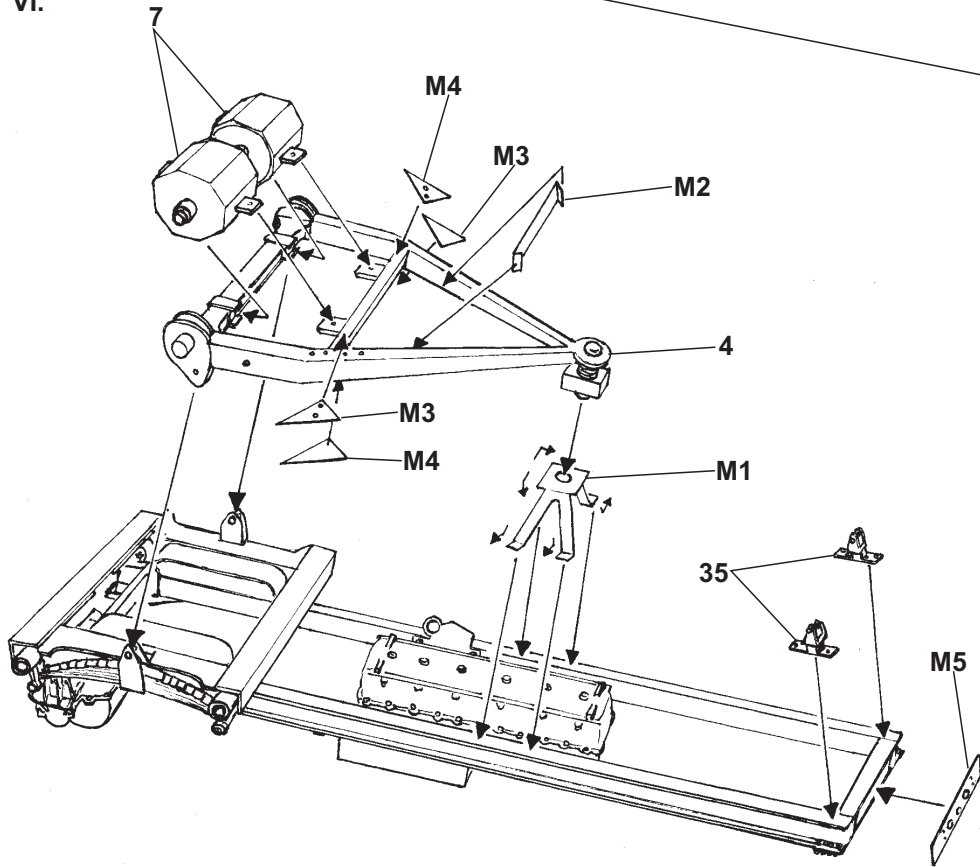
IV.



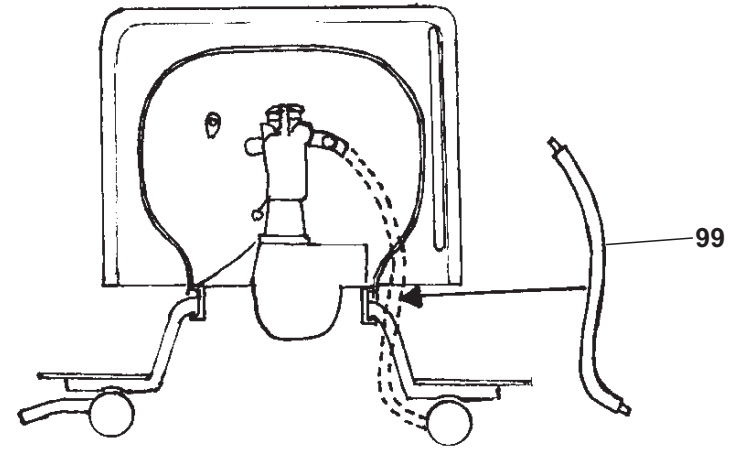
V.



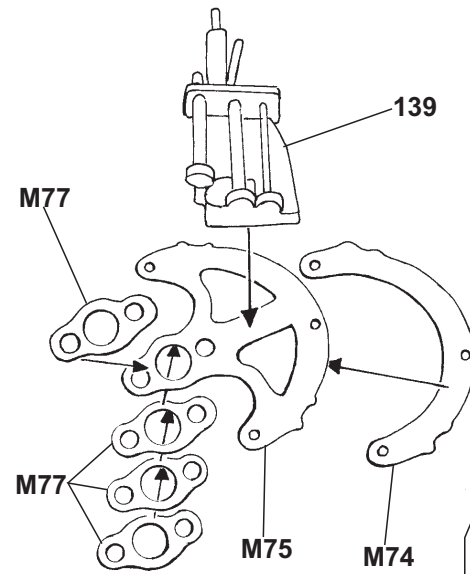
VI.



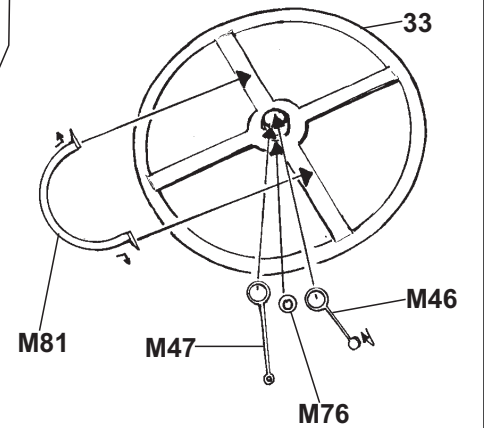
XXXIX.



XL.

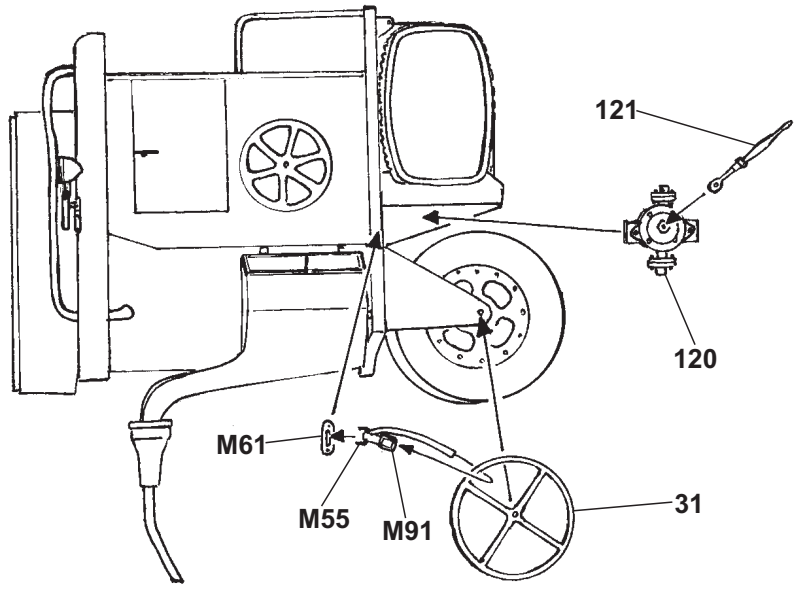


XLI.

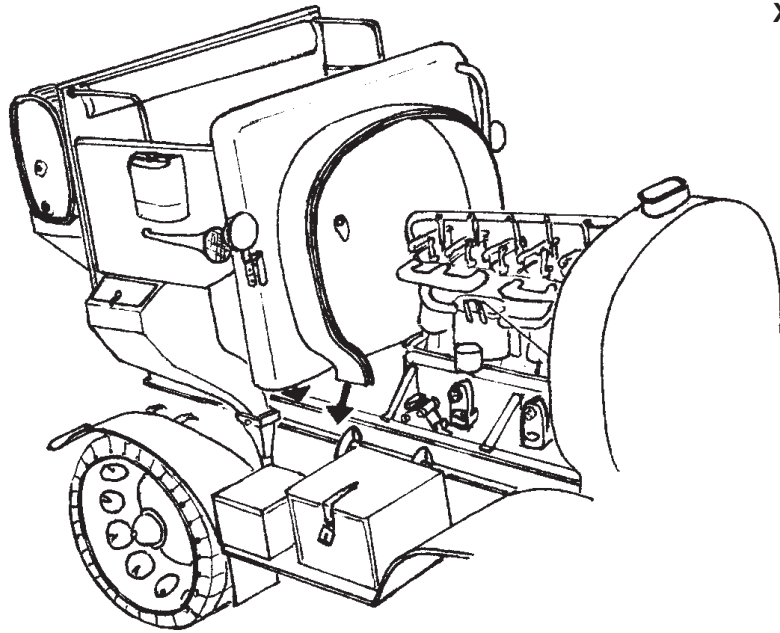




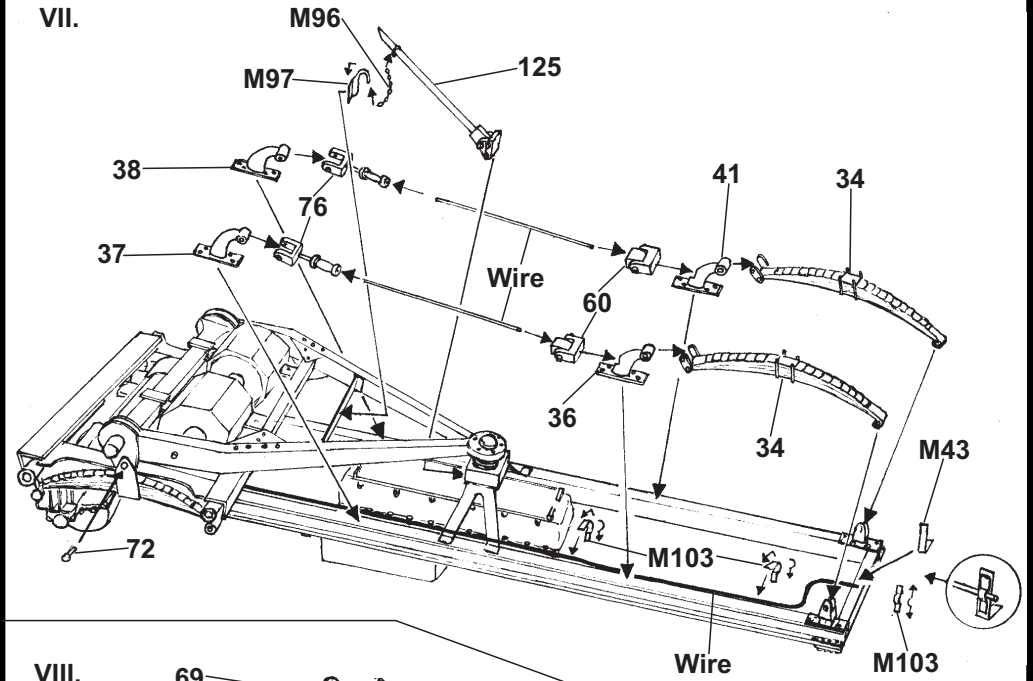
XXXVII.



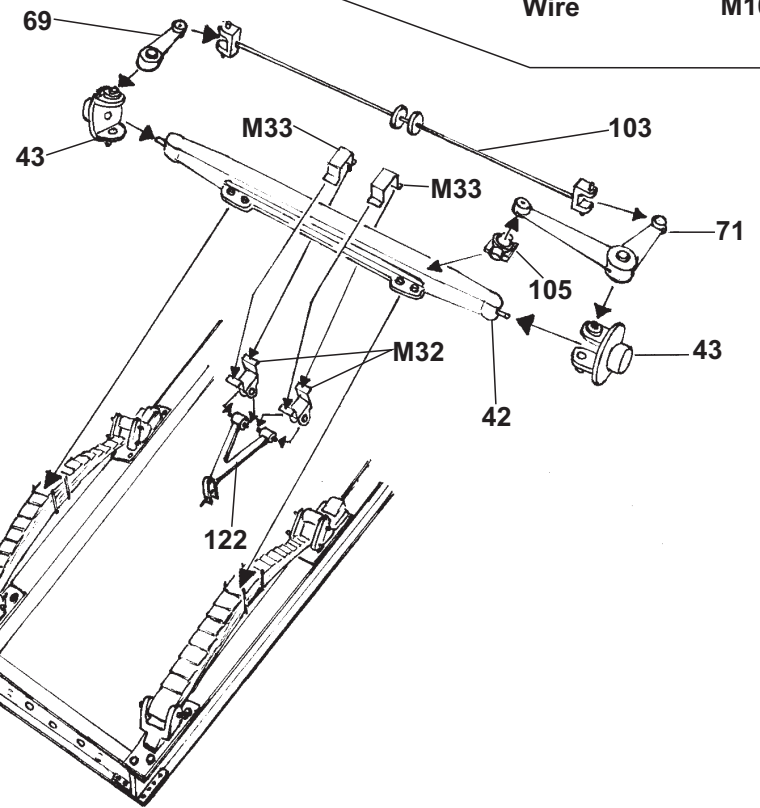
XXXVIII.



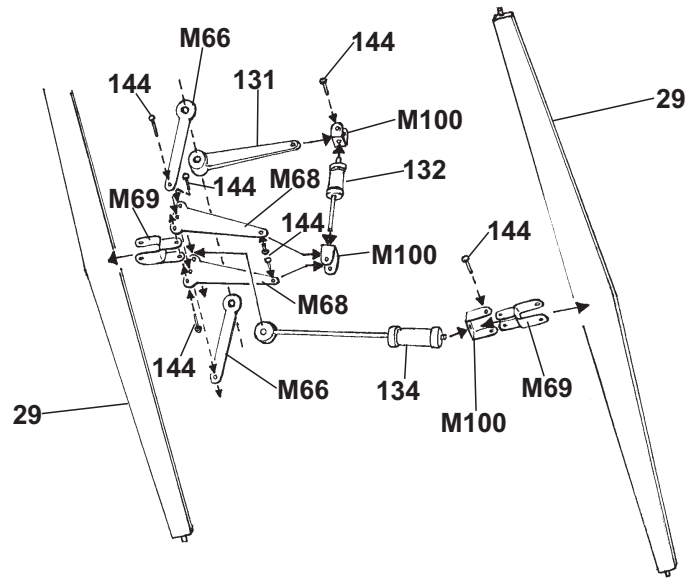
VII.



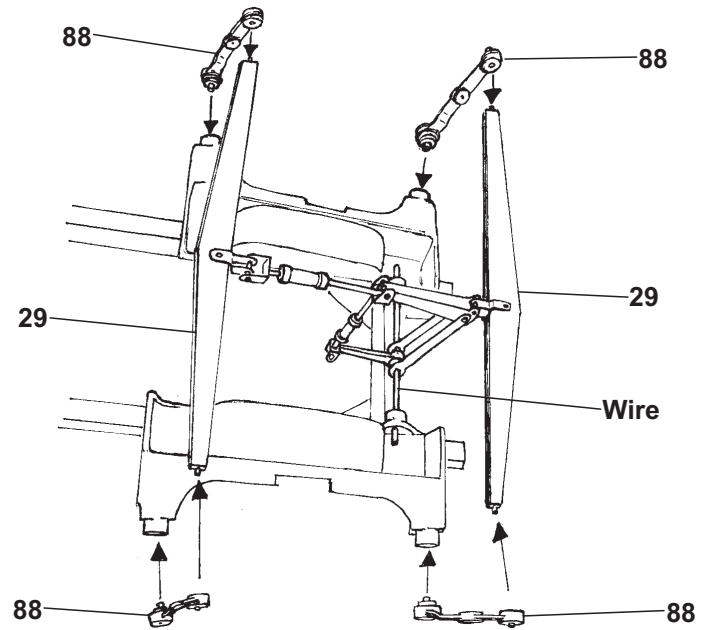
VIII.



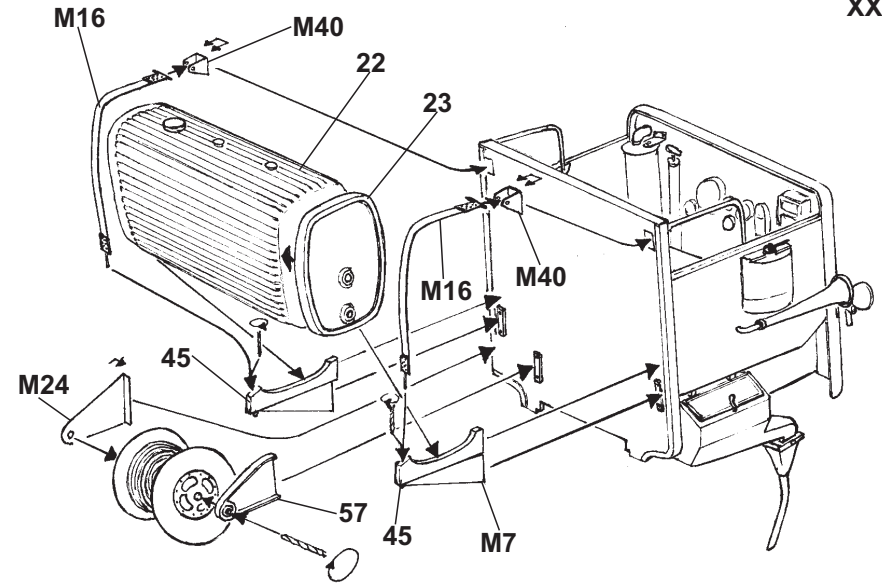
IX.



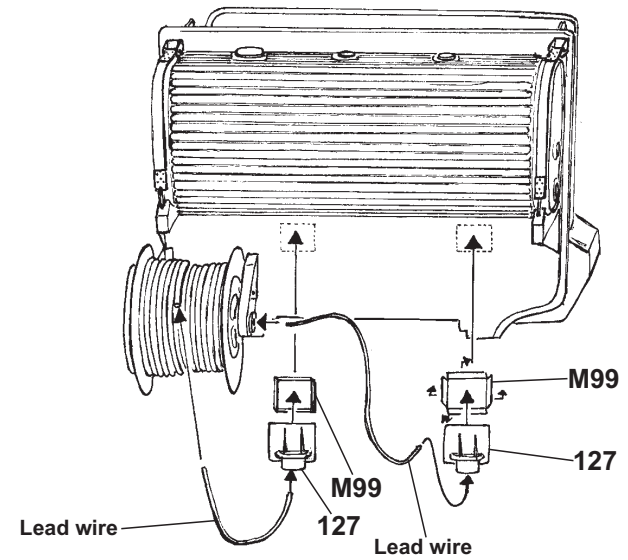
X.



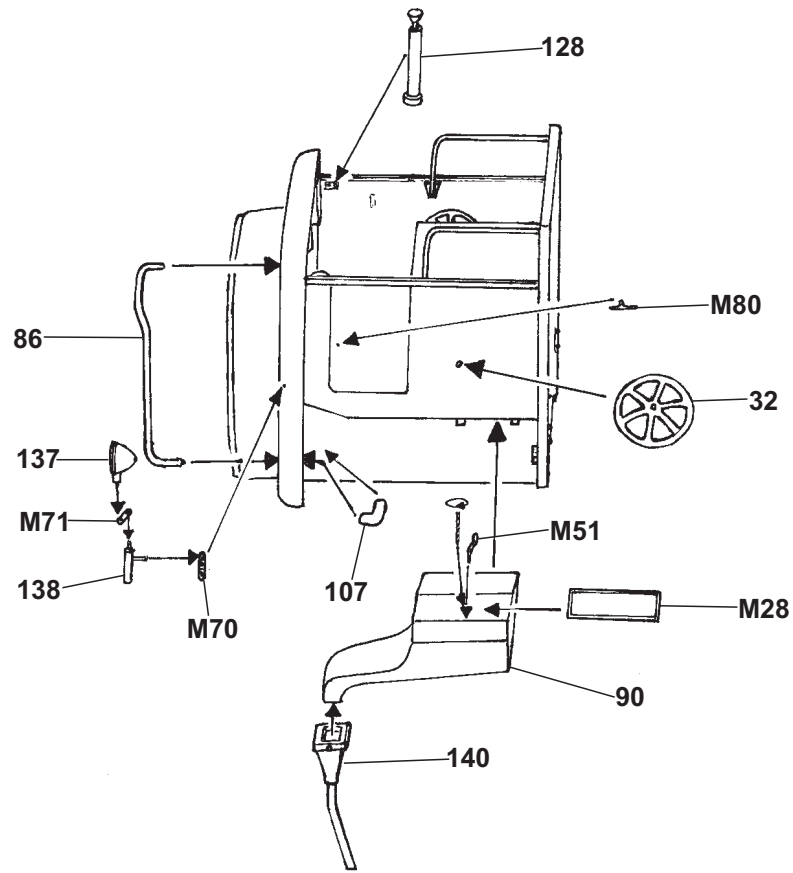
XXXV.



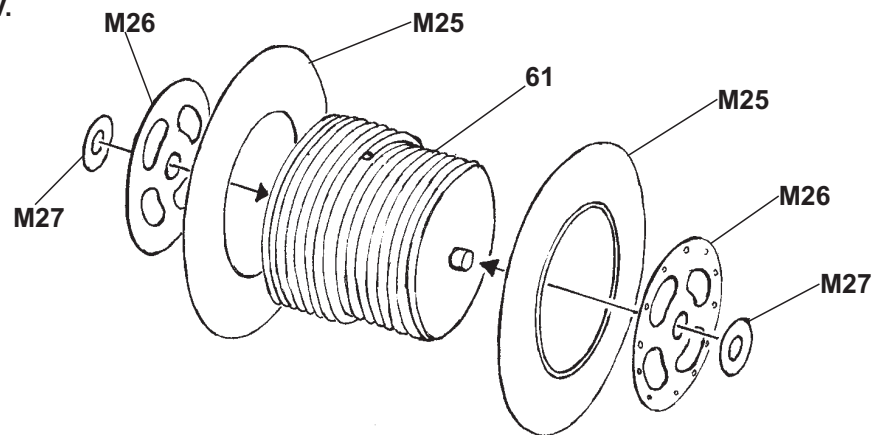
XXXVI.



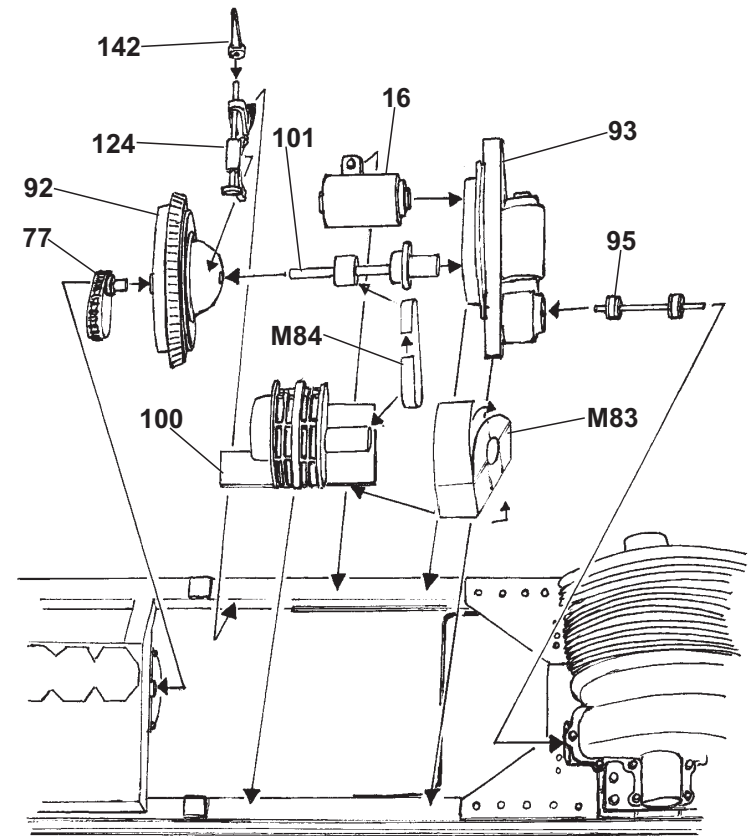
XXXIII.



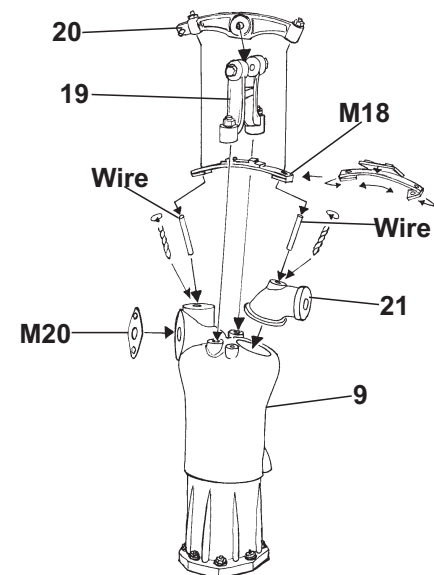
XXXIV.



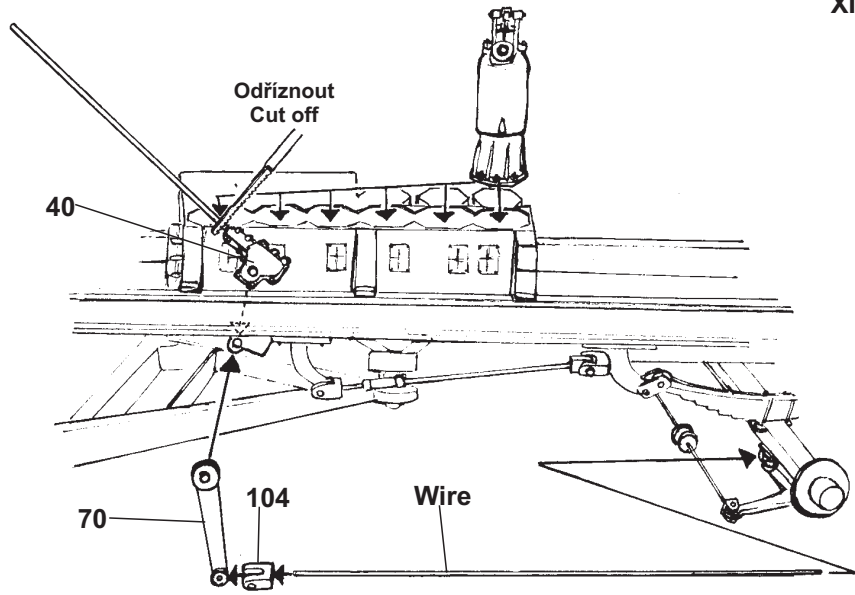
XI.



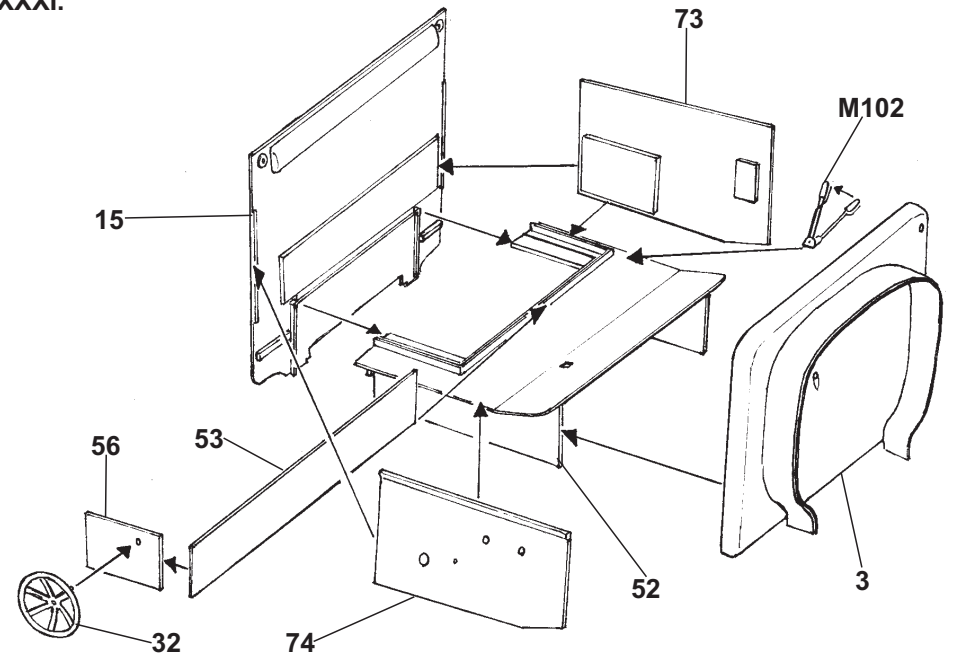
XII.



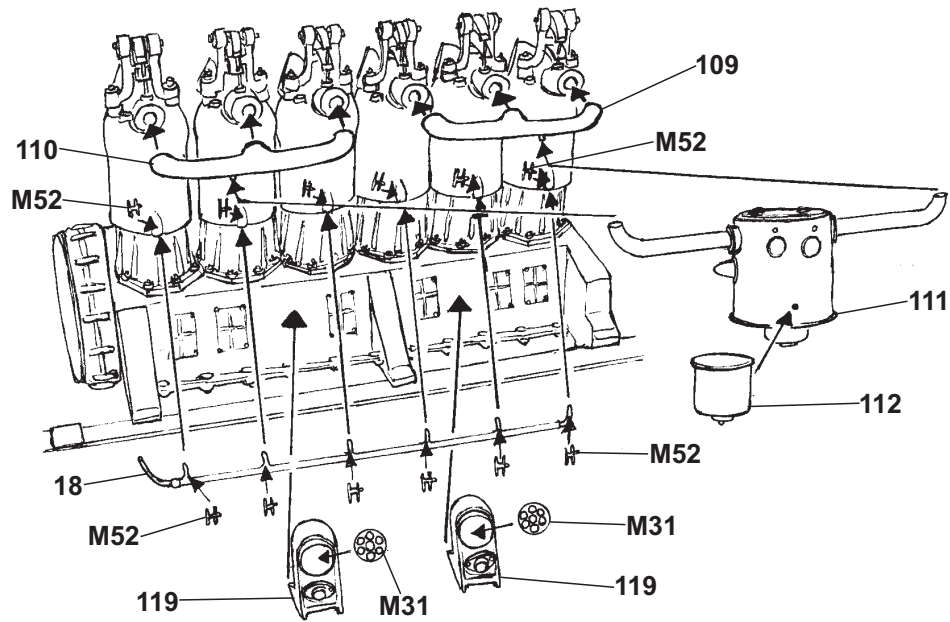
XIII.



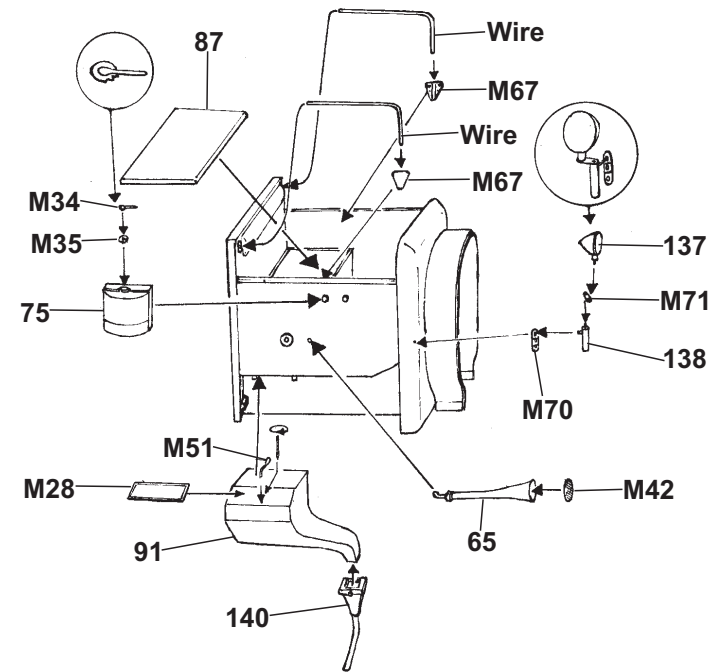
XXXI.



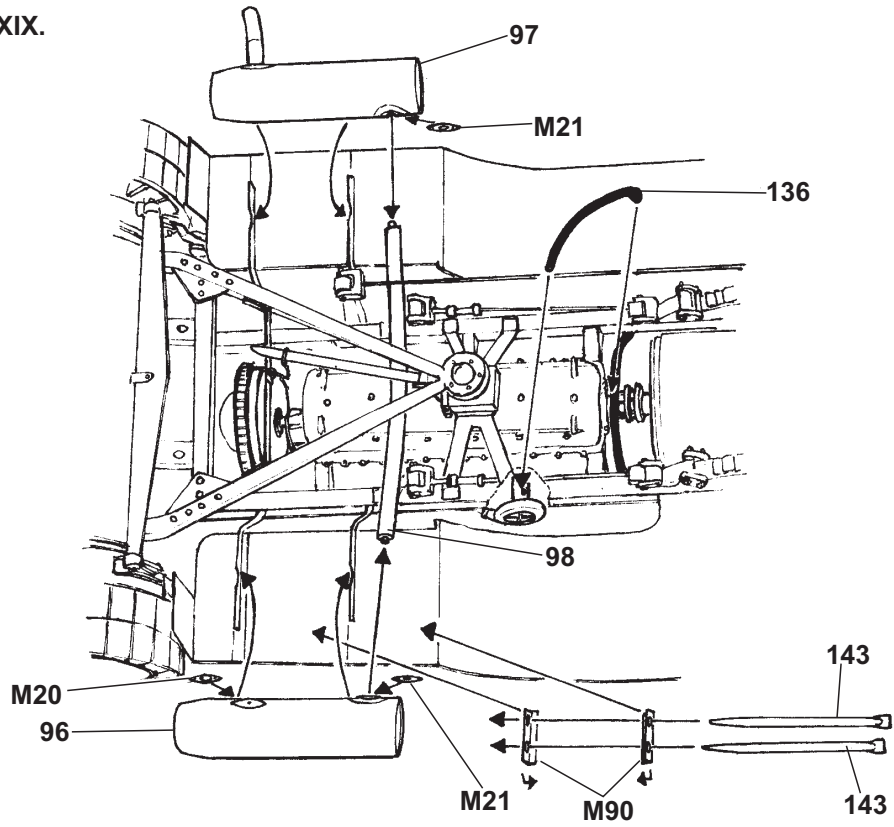
XIV.



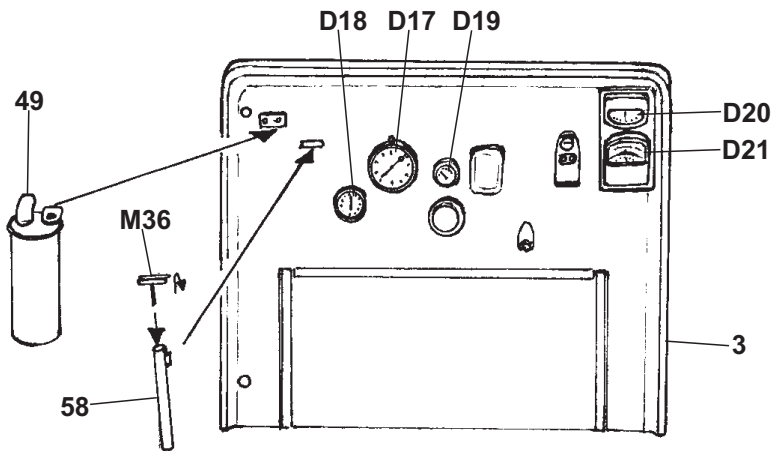
XXXII.



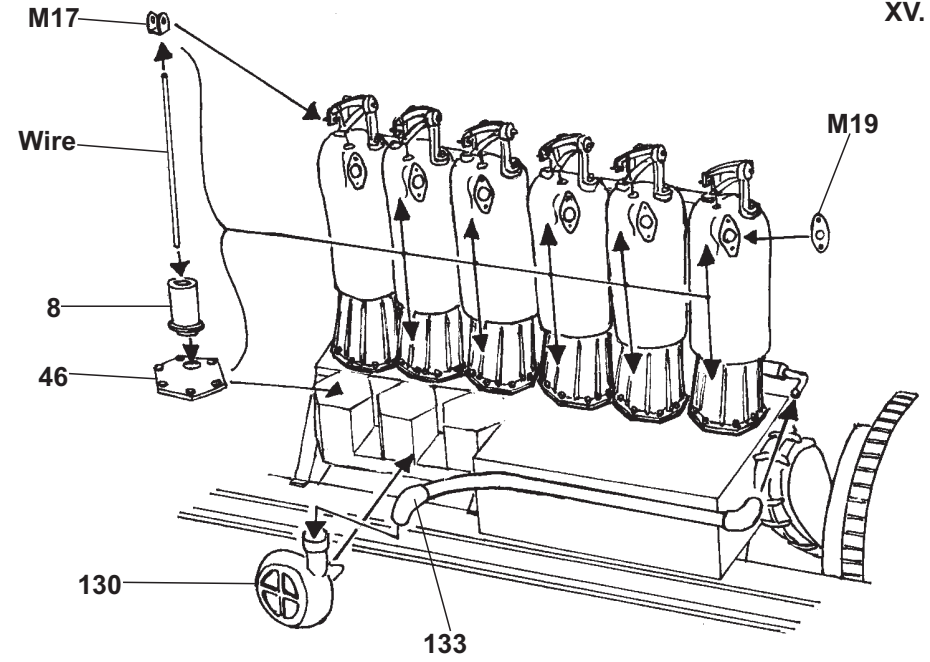
XXIX.



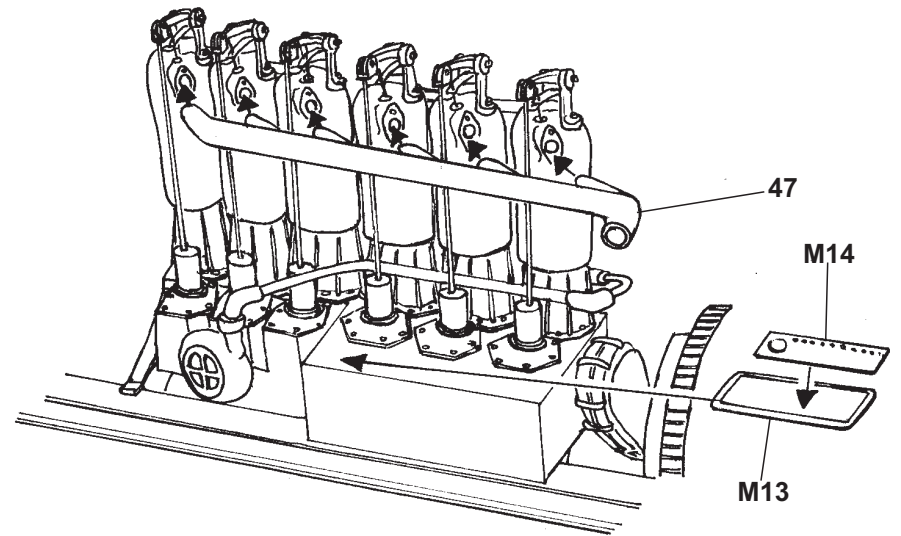
XXX.



XV.

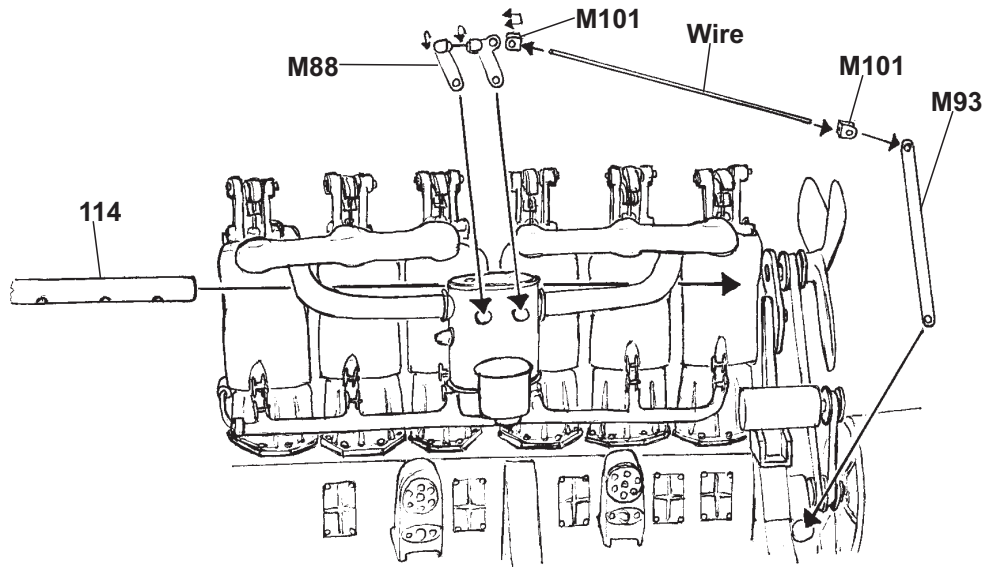


XVI.

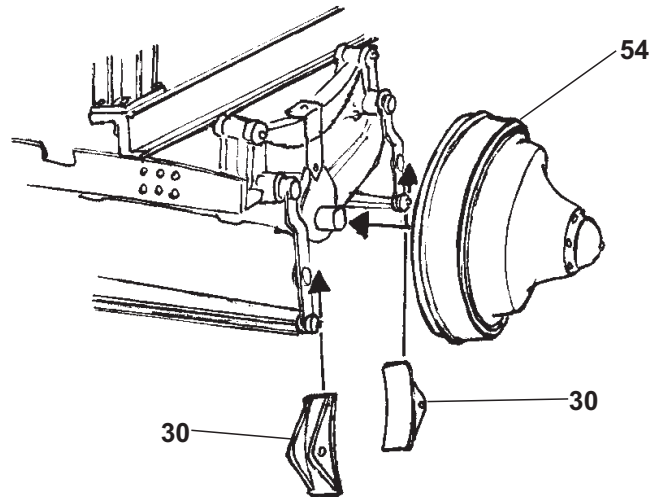




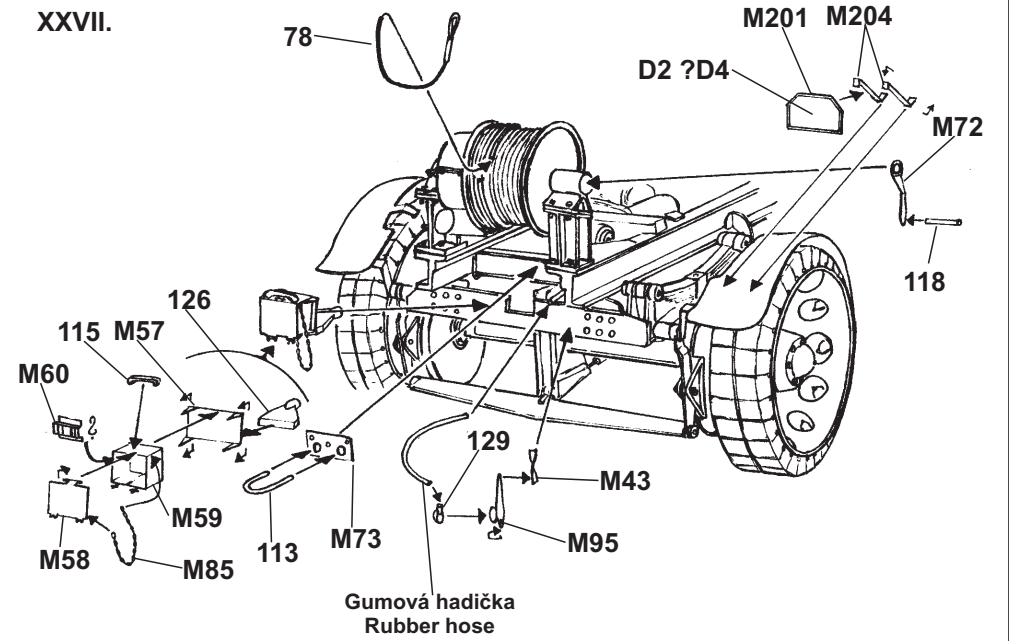
XVII.



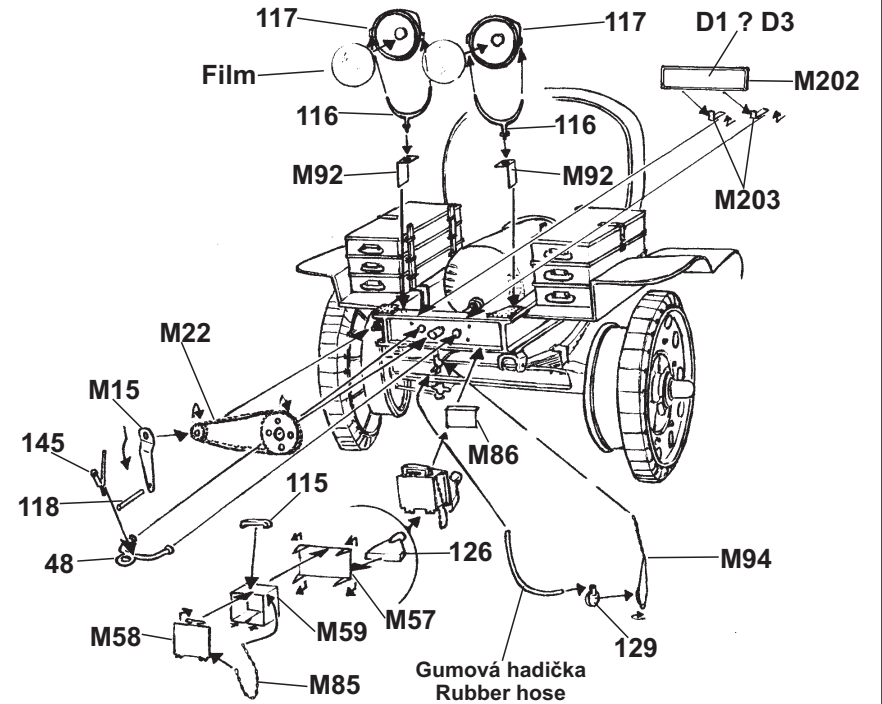
XVIII.



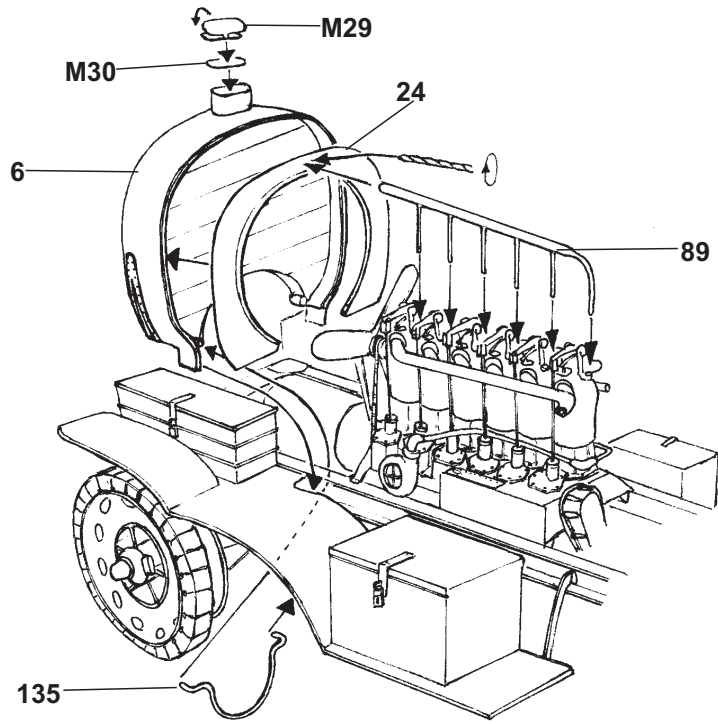
XXVII.



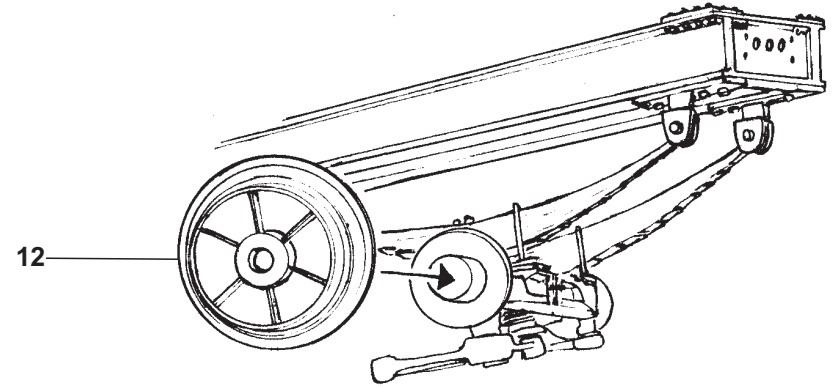
XXVIII.



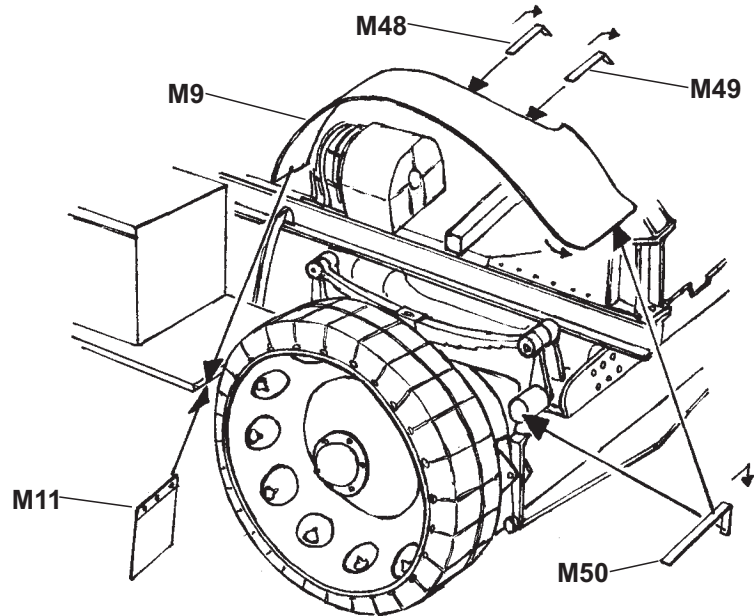
XXV.



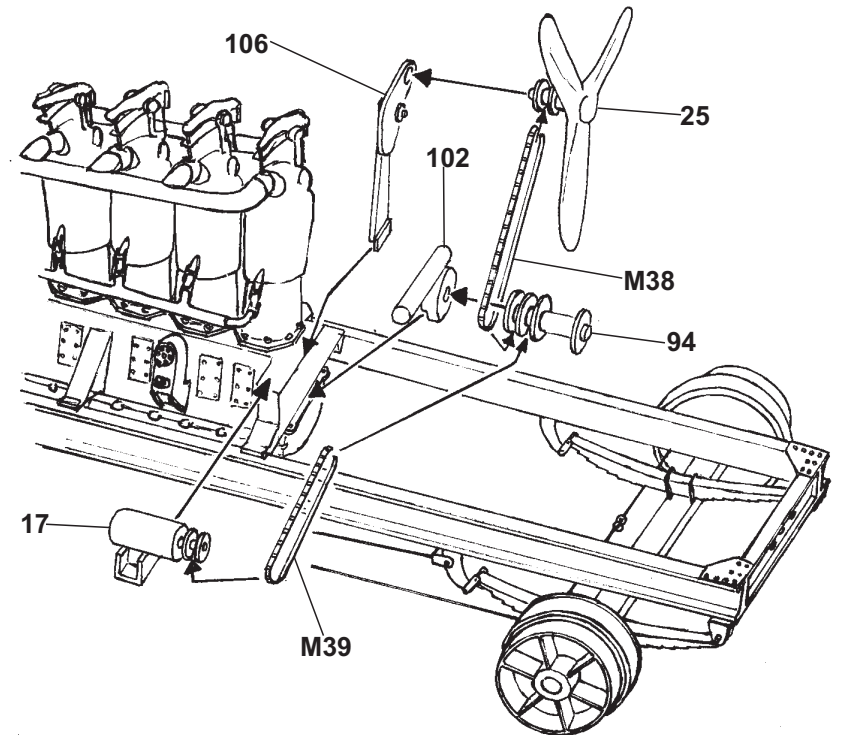
XIX.



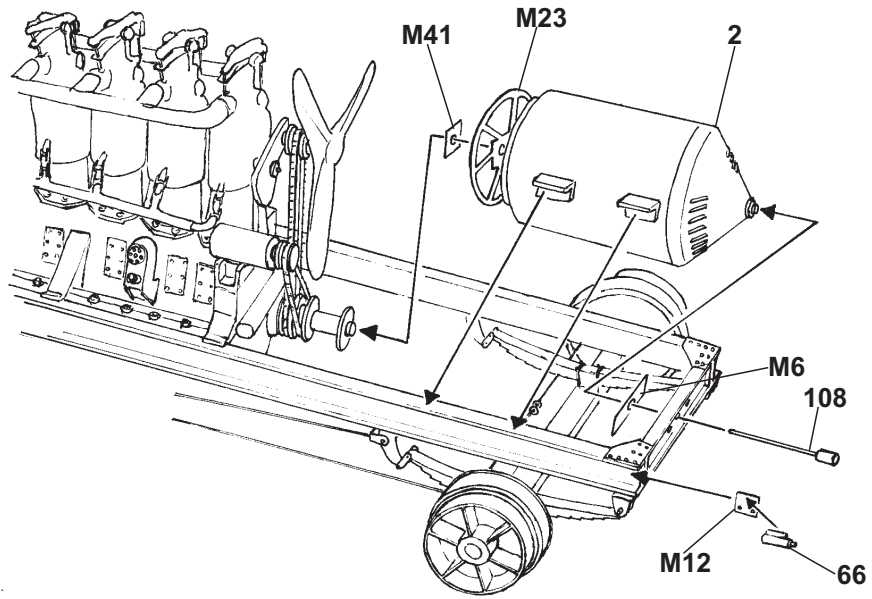
XXVI.



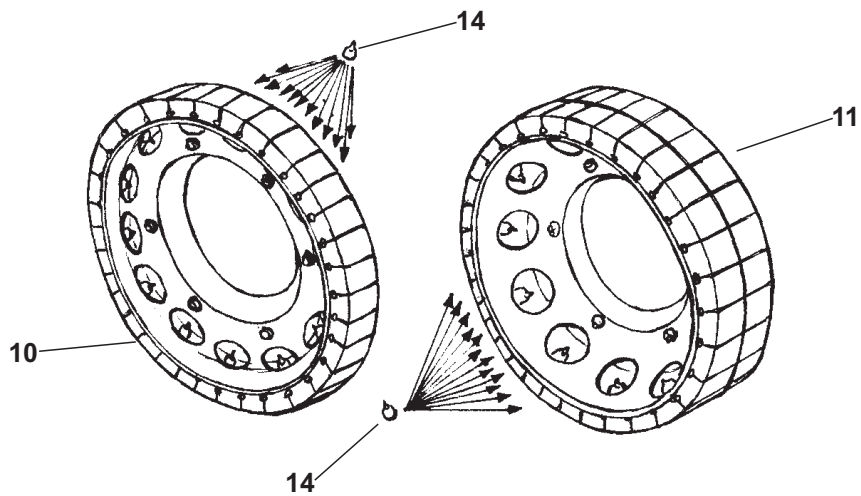
XX.



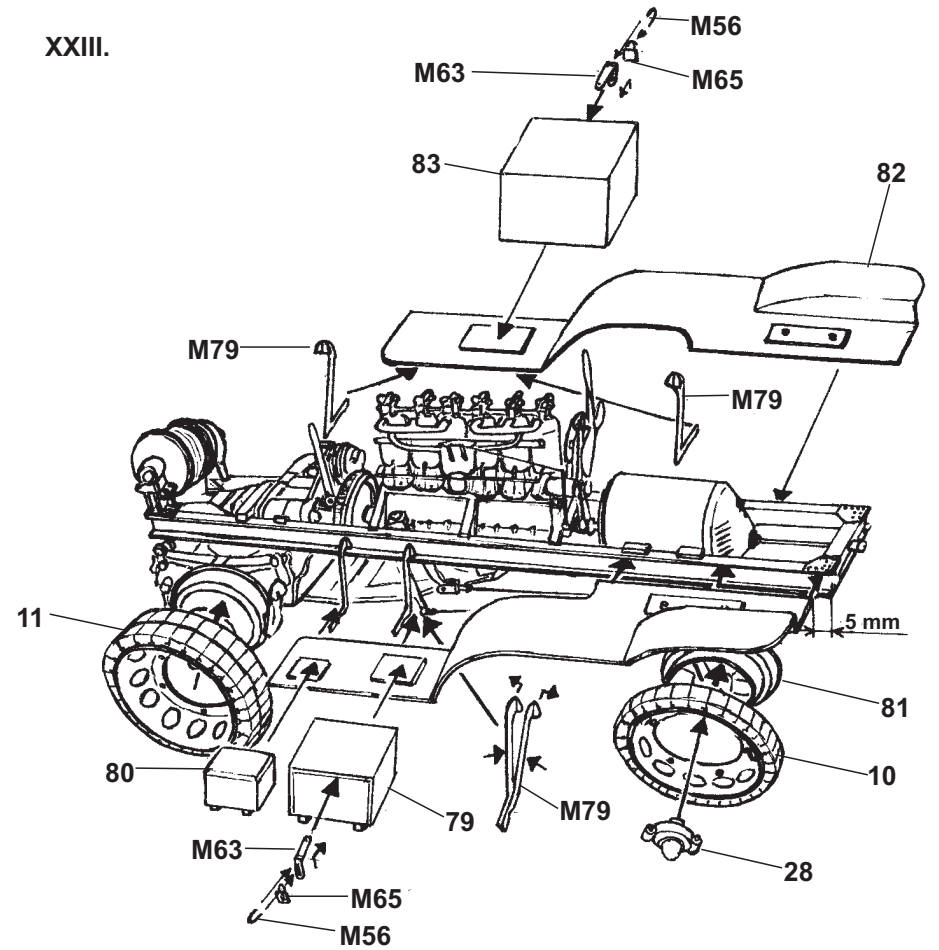
XXI.



XXII.



XXIII.



XXIV.

